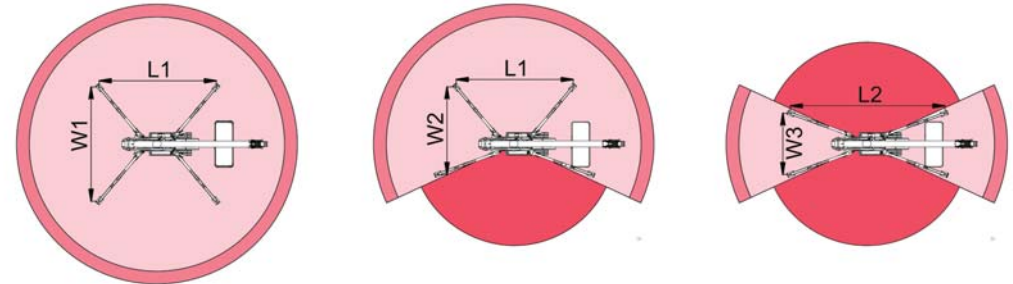
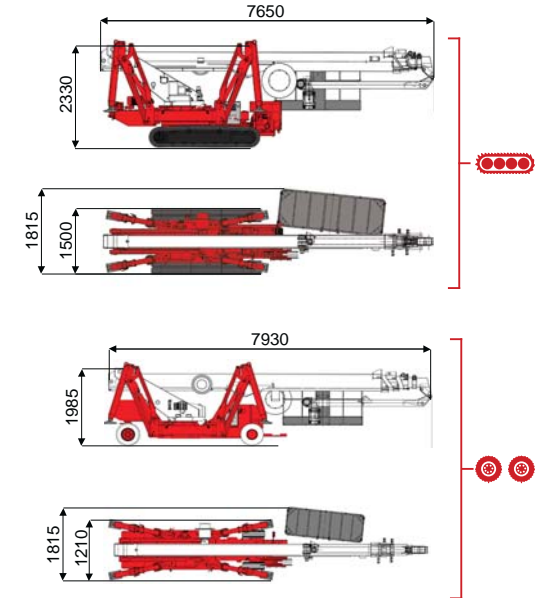
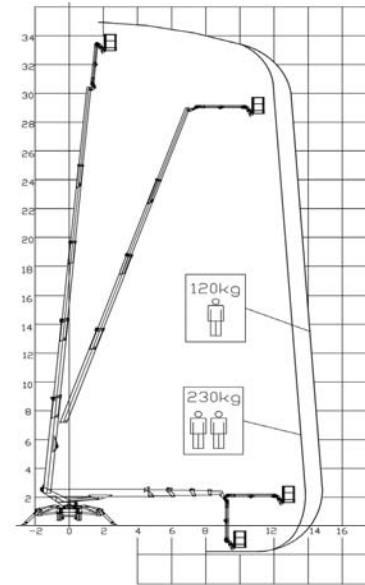




35 m ↑
14,5 m →
230 Kg 👤 👤



| 14000 mm | 15000 mm | 8500 mm | L1 | L2 | W1 | W2 | W3 |
|----------|----------|------------|---------|---------|---------|---------|---------|
| 230 kg | 120 kg | 120/230 kg | 5025 mm | 5990 mm | 4250 mm | 3510 mm | 2770 mm |

BI-ENERGY
Diesel+AC



TSJ 35/C 35 m 14,5 m 230 kg 175° 660° 180x70 cm 90°+80° 3,45-4,46 m 15% 40% 1,4 km/h 6600 kg 42 kN 4,08 kN/m² 5,12 kN/m² 1500 mm 7650 mm 2330 mm

TSJ 35/R 35 m 14,5 m 230 kg 175° 660° 180x70 cm 90°+80° 3,35-4,9 m 15% 25% 2 km/h 6800 kg 42 kN 4,20 kN/m² 5,27 kN/m² 1210 mm 7930 mm 1985 mm



Battery type



Battery charge



Add. Weight



Autonomy



Charging time

Electropump

ECO DC+AC 48V 270 A/h 5h 230V-48V 45A 400 kg 6-7 h endless 7h 48V 9 kW